



solutions in steel

Building services plays a key role in all sophisticated new build projects. Innovation is key if the retail sector is going to deliver its sustainability objectives...

The case for lightweight steel construction has never been more compelling:

- Applications
- Building Solutions
- Features & Benefits
- Design & Detailing
- Sustainability
- Conclusions & Recommendations

Light Gauge Steel Framing
Interbuild (NEC), October 2009



solutions in steel

Applications

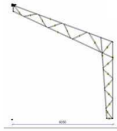


Light Gauge Steel Framing
Interbuild (NEC), October 2009



solutions in steel

Building Solutions



Light Gauge Steel Framing
Interbuild (NEC), October 2009



solutions in steel

Features & Benefits

- Efficient design and accurate detailing - the build-time is minimised with early pay-back.
- Versatile & comprehensive section range affording a wide range of suitable applications.
- Sections & frames are strong and lightweight, offering impressive load-bearing performance.
- Warm-frame constructions, maximising insulation values, minimising condensation risk.
- Joints are screwed or bolted, maximising flexibility and recycling opportunities.
- Frames can be designed to support almost all cladding, insulation and facade systems.
- Typically lighter than timber framing, more robust, and with proven sustainability.
- Uses coated, galvanised steel strip, for longer design life and appearance.
- Allows the opportunity to secure NHBC, Zurich and Project Builder accreditations.



Light Gauge Steel Framing
Interbuild (NEC), October 2009

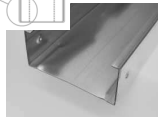


solutions in steel

Design & Detailing



BS 6399 : loading for buildings
BS 5950 : structural use of steelwork in building



Light Gauge Steel Framing
Interbuild (NEC), October 2009



solutions in steel

Sustainability



"Nothing could be more natural or sustainable than to build our world with steel. Iron, the basic raw material, is the most abundant element on Earth. A compass points north because the iron content of the planet gives it polarity like a magnet. This inexhaustible natural resource becomes truly infinite as steel can be recycled indefinitely without loss of property or performance. Steel is the socially, economically and environmentally responsible and natural choice for a century that must put sustainability first."

<http://www.corusconstruction.com/en/sustainability/>

Light Gauge Steel Framing
Interbuild (NEC), October 2009



solutions in steel

Sustainability



Sustainability of steel.
The manufacturing process.
Minimise both the energy used and any scrap created.
Steel generally does not lose strength or stiffness over time.
Joints can be easily dismantled.
Sections can be re-manufactured for revised use.
More than 40% of "new" steel is produced from re-cycled steel.

Light Gauge Steel Framing
Interbuild (NEC), October 2009



solutions in steel

Conclusions & Recommendations

*A wide range of uses across all sectors.
Innovative solutions for all construction types.
Features & benefits – on the money.
Proven design, long life, speedy installation.
Manufacture direct from architect's CAD drawings.
Green credentials.
Specify with confidence.
No constraint on architectural imagination.
Fits really well in the retail sector.
Buy some!*

Light Gauge Steel Framing
Interbuild (NEC), October 2009

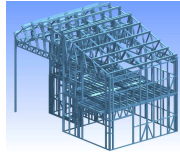


solutions in steel

Thank you!

Howard Duckwith
Light Gauge Steel Framing,
The Old Brewery,
High Street,
Sherburn,
Malton,
N. Yorks,
YO17 9GB

Tel: 01944 710279
Fax: 01944 710450
Email: sales@lgsf.co.uk
Web: www.lgsf.co.uk



Light Gauge Steel Framing
Interbuild (NEC), October 2009